

GRANTS & AWARDS



2024 RSNA R&E Foundation
Funding Radiology's Future®

For four decades, the RSNA R&E Foundation has ignited groundbreaking research and education in radiology, thanks to the unwavering support of donors like you. Your contributions have been instrumental in illuminating new possibilities and advancing our specialty.

As we celebrate our 40th anniversary, we reflect on the incredible journey we have shared. Your continued support has been pivotal in funding groundbreaking research, advancing education, and improving patient care.

What began with just two grants in 1984 has, with your help, grown to more than 1,900 grants. This year alone, the R&E Foundation Board of Trustees approved 80 grants across 46 institutions and disbursed a record-breaking \$5.26 million—bringing the total funded to over \$84 million!

The Foundation remains committed to demonstrating agility in adapting to the challenges facing our profession. In 2022, we launched the first Emerging Issues grant to address timely needs, and since then, we've allocated \$1.8 million to support urgent issues that threaten radiologic sciences and the health of the patients we serve.

Your support has been critical in advancing medical imaging education and research, leading to improved patient care and groundbreaking discoveries. Thanks to your generosity, our grantees are at the forefront of transforming radiology, shaping the future of patient care, and inspiring the next generation of medical imaging professionals.

We hope you will join us in celebrating 40 remarkable years of the R&E Foundation. We are deeply grateful for your continued partnership, and together, we are building a stronger future for radiology.

Thank you so much.

Sincerely,



Satoshi Minoshima, MD, PhD
Chair, Board of Trustees
RSNA R&E Foundation



Read full grant abstracts and see how RSNA grant recipients are making a difference at [RSNA.org/GrantSearch](https://www.rsna.org/GrantSearch).



TABLE OF CONTENTS

- GRANT & AWARD DESCRIPTIONS 2
- RECOGNITION & THANKS..... 3
- RESEARCH GRANTS
 - Research Scholar Grant..... 4
 - Research Seed Grant..... 10
 - Research Resident/Fellow Grant 13
 - Research Medical Student Grant 21
- EMERGING ISSUES GRANT 29
- EDUCATION GRANTS 32
- ROENTGEN RESIDENT/FELLOW RESEARCH AWARD ... 34



GRANT & AWARD DESCRIPTIONS

RESEARCH SCHOLAR GRANT

The Foundation's premier career development grant is designed to transition junior faculty to independent investigators. Funding protects research time to conduct complex projects under the guidance of a mentor and scientific advisor.

RESEARCH SEED GRANT

Every great discovery starts with a spark. This grant provides seed money to test hypotheses and conduct pilot studies to prepare major grant applications to corporations, foundations and government agencies.

RESEARCH RESIDENT/FELLOW GRANT

These grants provide early career investigators a chance to explore powerful ideas, gain insight into specific investigations and practice research methods and techniques.

RESEARCH MEDICAL STUDENT GRANT

Exposure to radiology in medical schools ignites a passion and encourages students to consider academic radiology as an option for their future. A summer project can turn into a career-long pursuit of research and discovery.

DEREK HARWOOD-NASH INTERNATIONAL EDUCATION SCHOLAR GRANT

This grant funds investigators looking to affect radiology education around the world. All projects are eligible for funding as long as they are on an international scale.

RSNA/AAR/APDR/SCARD RADIOLOGY EDUCATION RESEARCH DEVELOPMENT GRANT

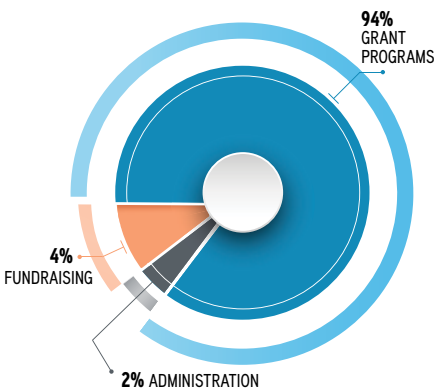
This grant helps to build a critical mass of radiology education researchers and promotes the careers of those with passion to advance the science of radiology around the world.

EMERGING ISSUES GRANT

The Foundation is invested in ensuring that the current and next generation of radiologists are able to meet the needs of the continuously evolving profession and help achieve equitable care for all. The Emerging Issues Grant was developed to rapidly and effectively address urgent issues that threaten the radiologic sciences and health and well-being of patients served.

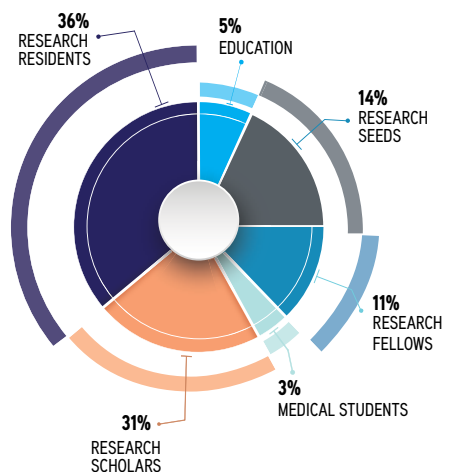
WHERE DO YOUR DONATIONS GO?

Low overhead directs more of your donations toward grant funding



HOW ARE GRANT DOLLARS DISTRIBUTED?

Percent of grant dollars awarded by grant type in 2024



RECOGNITION & THANKS

Through the generosity of our donors, the RSNA R&E Foundation is able to continue its investment in R&D for radiology.

The Foundation acknowledges the distinguished individuals and the Visionaries in Practice (VIP) Program donors who have established endowments and awards in their names or in the names of those honored.

Derek Harwood-Nash, MD

Joan Eliasoph Charitable Remainder Annuity Trust

Martin R. Prince, MD, PhD

Ralph Schlaeger Charitable Foundation

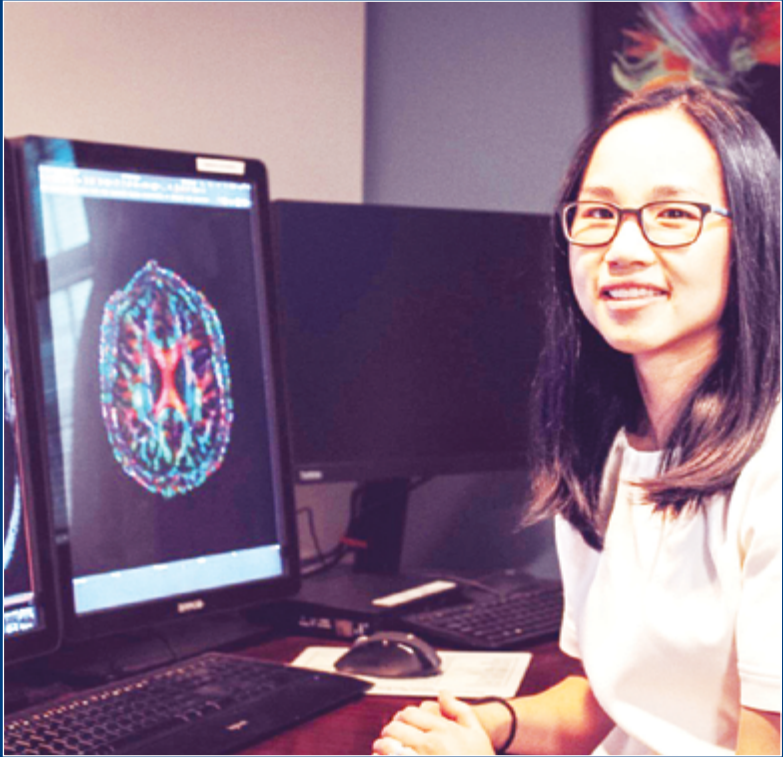
RSNA Presidents Circle

Strategic Radiology

The Foundation is grateful for the major contributions from corporate donors through the Vanguard Program.



RESEARCH SCHOLAR GRANT



"I am honored to receive an RSNA Research Scholar Grant, which marks an important milestone in my research career and crucial path to independent funding. This grant will bridge exciting developments in basic hearing research with advanced imaging techniques to help elucidate the brain's central hearing pathway. RSNA support provides a critical step for translating findings from mouse models to humans. We aim for earlier detection of noise-induced hearing changes before standard tests can identify them, which may drive earlier intervention and ultimately prevent debilitating hearing loss. I am very grateful to RSNA for this opportunity."

- Katherine Reinshagen, MD



SHARATH BHAGAVATULA, MD

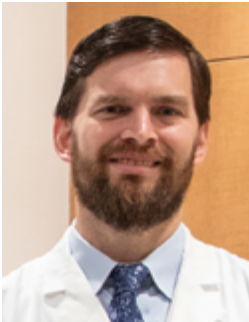
Brigham and Women's Hospital

Development of Superparamagnetic Iron-Oxide Nanoparticle (SPIO-NP)-Enhanced Microwave Ablation

*GE HealthCare/
RSNA Research Scholar Grant*



GE HealthCare

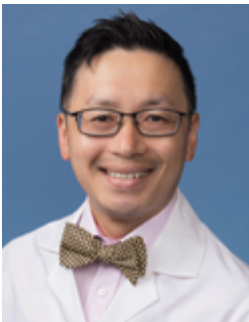


DAVID BALLARD, MD

Mallinckrodt Institute of Radiology

Feasibility of 18 F-Fdg PET-MR to Assess Perianal Fistula Inflammation in Symptomatic Perianal Crohn's Disease

*Bracco Diagnostics Inc./
RSNA Research Scholar Grant*



JASON CHIANG, MD, PHD

University of California, Los Angeles

Augmenting Microwave Ablation with Supercharged NK Cell Therapy in an Oncopig Liver Tumor Model

RSNA Research Scholar Grant



MAGGIE CHUNG, MD

University of California, San Francisco

Deep-Learning Based Simulated Contrast Breast MRI for Supplemental Breast Cancer Screening

RSNA Research Scholar Grant

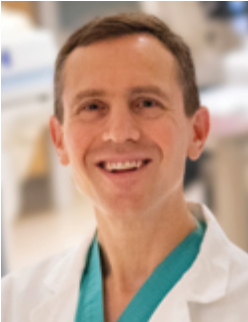


ELIZABETH GEORGE, MBBS

University of California, San Francisco

Quantitative Susceptibility Mapping of Neonatal Cerebral Oxygenation to Predict Neurodevelopmental Outcomes in Congenital Heart Disease

RSNA Research Scholar Grant



ROGER GOLDMAN, MD, PHD

University of California, Davis

Artificial Intelligence for Interpretation and Localization in Digital Subtraction Angiography

RSNA Research Scholar Grant



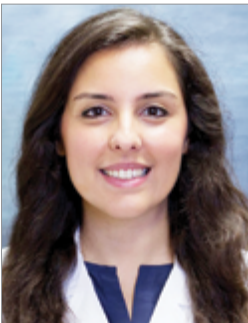
XIAOYANG LIU, MD, PHD

University of Toronto

Multimodal Integration of Radiology, Genomics and Pathology for Recurrence Prediction in Hepatocellular Carcinomas After Curative Resection

AGFA HealthCare/RSNA Research Scholar Grant

AGFA 
HealthCare



SARAH MOHAJERI, MD, MPH

University of Rochester

Imaging Hypoxic Brain Injury in Cerebral Malaria: Role in the Acute Phase of Disease, Death and Long-Term Sequela in Survivors

RSNA Research Scholar Grant

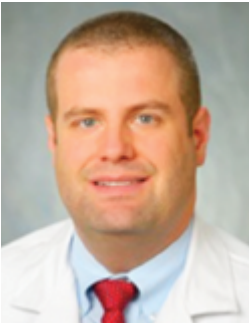


CHRISTOPHER NEWMAN, MD, PHD

Indiana University

Supplementation of Skeletal Survey with Whole Body MRI for Fracture Detection in Children with Suspected Physical Abuse

RSNA Research Scholar Grant



AUSTIN R. PANTEL, MD, MSTR

University of Pennsylvania

Dual-Tracer Multiparametric PET to Better Characterize Cancer

RSNA Research Scholar Grant



ALI PIRASTEH, MD

University of Wisconsin-Madison

Development of FAPI PET as a Non-Invasive Biomarker of Liver Fibrogenesis

RSNA Research Scholar Grant



BENJAMIN PULLI, MD

Stanford University

Intra-arterial Microenvironment Sampling in Acute Ischemic Stroke Patients Treated by Endovascular Thrombectomy

Joan Eliasoph, MD/

RSNA Research Scholar Grant



KATHERINE REINSHAGEN, MD

Massachusetts Eye & Ear

Characterizing Structural Connectivity
in the Central Auditory Pathway from
Hidden Hearing Loss

RSNA Research Scholar Grant

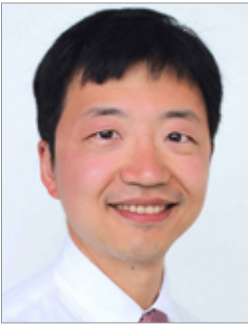


LIQIANG REN, PHD, DABR

The University of Texas Southwestern Medical Center

Early Detection of Pancreatic Ductal
Adenocarcinoma with Clinical Photon-Counting
Computed Tomography

RSNA Research Scholar Grant



JAEHOON SHIN, MD, PHD

University of California, San Francisco

A Novel Strategy for Locoregional
Engineered T Cell Therapy

*Canon Medical Systems USA, Inc./
RSNA Research Scholar Grant*

Canon
CANON MEDICAL



ZAID SIDDIQUI, MD

Baylor College of Medicine

Deep Embeddings to Identify Early
Phenotype Changes in Brain Metastases

RSNA Research Scholar Grant



SUSAN SOTARDI, MD

Children's Hospital of Philadelphia

Center for Diagnostic Imaging in Child
Maltreatment: Improving Fracture Detection
Through Machine Learning

RSNA Research Scholar Grant



KARTHIK M. SUNDARAM, MD, PHD

University of Pennsylvania

Developing an Image-Guided Approach for
Optimal Surgical Debulking and Treatment of
Recurrent Ovarian Cancer Using a Novel
Theranostic Agent

GE HealthCare/RSNA Research Scholar Grant



GE HealthCare

RESEARCH SEED GRANT



“RSNA funds helped me develop new diagnostic tools and build a research program based on non-invasive vascular imaging in children using quantitative ultrasound. This effort has not only sharpened my radiological and analytical skills but also had a real positive impact, advancing my research work in pediatric radiology in the aim of improving children’s health. Furthermore, it allowed me to use new imaging technology validated in adult radiology and apply it to pediatric radiology hence ensuring knowledge transfer in the continuum of children-adult health care. None of this would have been possible without the support and collaboration of RSNA, my team, department, and institution. Looking at it from a different perspective, we are making strides to continuously improve diagnosis in children to prevent disease progression into adulthood.”

- Ramy El Jalbout, MD, MSc, DABR



ASIM K. BAG, MD

St. Jude Children's Research Hospital

Linking Altered Sleep Patterns with
Neuroinflammation

*Joan Eliasoph, MD/
RSNA Research Seed Grant*



RAMY EL JALBOUT, MD

CHU Sainte-Justine

Development of Quantitative Measure of Red
Blood Cell Aggregation on Ultrasound to Detect
Complications of Sickle Cell Disease in Children

RSNA Research Seed Grant



DAVID FETZER, MD

University of Texas Southwestern Medical Center

Validation of Ultrasound Liver Fat
Quantification Techniques by Novel Lipid
Microparticle Phantoms

RSNA Research Seed Grant



LOUIS GAGNON, MD, PHD

Laval University

Deep Learning Segmentation of Cellular
Tumor from Multishell Diffusion MRI

RSNA Research Seed Grant



CHENCHAN HUANG, MD

New York University

Improving Risk Prediction for Malignancy
in Pancreatic Cystic Lesions

Siemens Healthineers/RSNA Research Seed Grant



**ABHILASH S. KIZHAKKE PULIYAKOTE
MS, PHD**

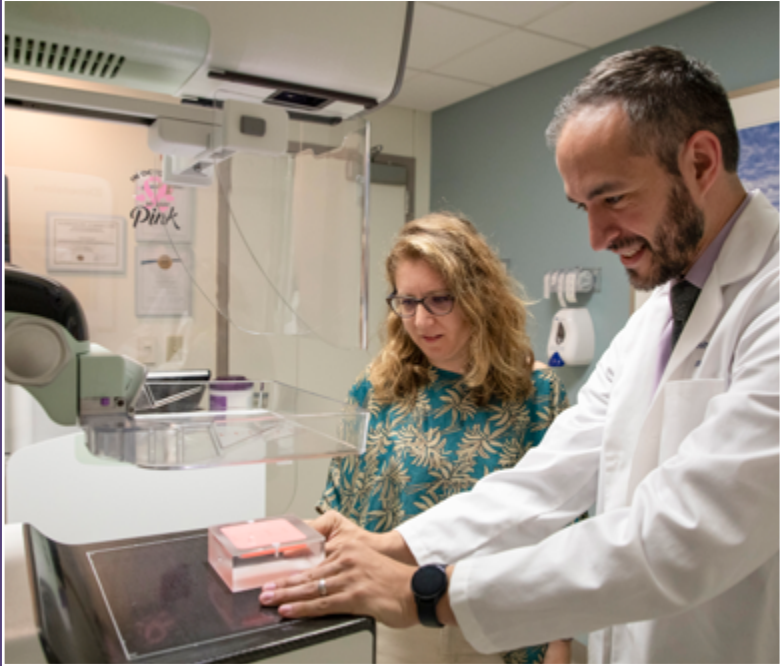
University of Iowa

Standardization of UTE MRI for Lung
Texture Analysis

RSNA Research Seed Grant



RESEARCH RESIDENT/FELLOW GRANT



“The support I will receive through the RSNA Research Resident Grant represents a chance to not only investigate a research question that reflects my scientific interests, but to explore and shape my professional identity. By facilitating a year-long project during my residency training, I can begin to formulate a hybrid role as a clinical breast imager and image science researcher, so that I can develop the skills I need to further my career as a clinician scientist. I am grateful for the support of my clinical and research mentors, and to the RSNA R&E Foundation for providing me with this unique opportunity, which has already opened doors for collaboration and mentorship which I might not otherwise have had.”

– Adrian A. Sánchez, MD, PhD



CAROLINE ADAMS, MD, PHD

University of Pennsylvania

Impact of Biological Sex and Age on Safety and Efficacy of Blood-Brain Barrier Opening by Focused Ultrasound

*Bracco Diagnostics Inc./
RSNA Research Resident Grant*



MAUREEN ALIRU, MD, PHD

University of Texas Southwestern Medical Center

Ligand-Independent Targeting of Tumor Cells for Cancer Treatment

*Strategic Radiology/
RSNA Research Resident Grant*



LEOU ISMAEL BANLA, MD, PHD

Massachusetts General Hospital

Promoting Tumor-Specific Immune Activation Using Radiation-Triggered Payload Release

RSNA Research Resident Grant



MEAGAN BECHEL, MD, PHD

Emory University

Information Technology Interventions to Improve Follow-Up for Incidental Pulmonary Nodules on CT

RSNA Research Resident Grant



KAUSTAV BERA, MD

University Hospitals Cleveland Medical Center

MR Fingerprinting for the Evaluation of Chronic Allograft Nephropathy: Reproducibility of the Technique and Correlation with Renal Function and Histopathology

RSNA Research Resident Grant



LUKE BONHAM, MD

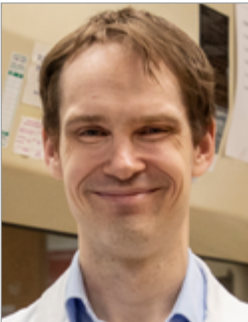
University of California, San Francisco

Evaluation of Glutamatergic Physiology in Frontotemporal Dementia Using Astrocytic Glutamate Transporter (EAAT2) PET and Glutamate Proton Magnetic Resonance Spectroscopy

GE HealthCare/RSNA Research Resident Grant



GE HealthCare



JOHN COOPER, MD, PHD

Washington University in St. Louis

Trem-1 Pet for the Characterization of Myeloid Inflammation After TBI in Mice

RSNA Research Resident Grant



ANNA DORNISCH, MD, MAS

University of California, San Diego

Comparison of Semi-Quantitative and Quantitative MRI of Localized, Clinically Significant Prostate Cancer to Histopathology in Development of Focal Boost Radiation Treatment Planning Strategies

GE HealthCare/RSNA Research Resident Grant



GE HealthCare



**STEPHANIE ODETTE DUDZINSKI,
MD, PHD**

MD Anderson Cancer Center

Using Perfluorocarbon Nanoparticles 19F MRI to Characterize Space Radiation Induced Acute Pro-Inflammatory Response and Anti-Inflammatory Effects of Radiation Mitigating Thrombin Peptide to Extend Healthy Life in Space

RSNA Research Resident Grant

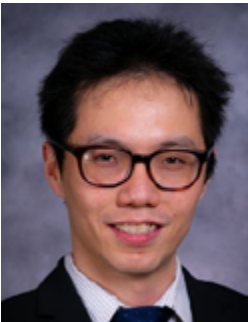


IRIS EKE, MD, PHD

Stanford University

Imaging and Transcriptomic Biomarkers for Prediction of Response to Low-Dose Radiotherapy in Follicular Lymphoma

RSNA Research Resident Grant

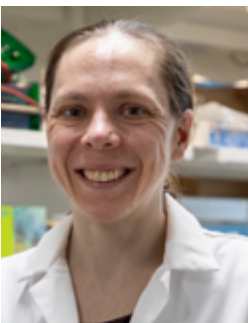


RUOQI GAO, MD, PHD

University of Texas Southwestern Medical Center

Targeted Delivery of a Nanoparticle-Loaded Sting Antagonist into Microglia as a Novel Therapeutic for Alzheimer's Disease

RSNA Presidents Circle Research Resident Grant



JACQUELINE GODBE, MD, PHD

Washington University in St. Louis

Development of a Nanofiber Pet Radiotracer Which Binds CD28 for Imaging Multiple Myeloma

RSNA Research Resident Grant



ADAM JAY GRIPPIN, MD, PHD

MD Anderson Cancer Center

Restoration of LKB1 Expression to
Sensitize Tumors to Chemoradiation

RSNA Research Resident Grant



SAUMYA GURBANI, MD, PHD

Emory University

Combined MR Spectroscopy and Chemical
Exchange Saturation Transfer Imaging at 7T

RSNA Research Resident Grant



SANNA HERWALD, MD, PHD

Stanford University

Prediction of Clinical Abscess
Drainage Outcomes and the Efficacy
of Potential Viscosity-Modifying
Biochemical Treatments by Measuring
Quantitative Abscess Fluid Viscosity

RSNA Research Resident Grant



MENG-LUN HSIEH, DO, PHD

University of Texas Southwestern Medical Center

Impact of Radiation on Macrophages and
Mesenchymal Progenitor Cells in Preventing
Heterotopic Ossification Formation

RSNA Research Resident Grant



LOHITH KINI, MD, PHD

University of California, San Francisco

Guiding Lesional and Non-Lesional
Epilepsy Surgery Through a Multi-Modal,
Network Approach

RSNA Research Resident Grant



TALYA LAUFER, MD

Thomas Jefferson University

Investigating the Role of Lipid Metabolism and
Stromal ApoE in Mediating Radioresistance of
Pancreatic Cancer

RSNA Research Resident Grant



VITOR FERNANDES MARTINS, MD, PHD

University of California, San Diego

Novel Quantitative Magnetic Resonance-
Based Evaluation of Fat Depot Reduction
in Adults with Obesity Undergoing
Bariatric Surgery

RSNA Research Resident Grant



JOHANNA OSPELE, MD, PHD

Foothills Medical Centre, University of Calgary

Validating Advanced Imaging Assessment for
Stroke Outcome Prediction (AI-STROKE)

RSNA Research Fellow Grant

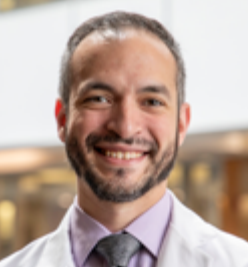


IAN PAN, MD

Brigham and Women's Hospital

Artificial Intelligence for Longitudinal
Segmentation and Tumor Risk
Prediction of IDH-mutant Gliomas

RSNA Research Resident Grant



ADRIAN A. SÁNCHEZ, MD, PHD

Washington University in St. Louis

Impact of Digital Breast Tomosynthesis Technical
Factors on Artificial Intelligence Algorithm
Performance in Breast Cancer Screening

RSNA Research Resident Grant



TICIAN SCHNITZLER, MD

University of California, San Francisco

Qualitative and Quantitative Imaging Biomarkers
of Interstitial Lung Abnormality (ILA) That Predict
Progression to IPF (Interstitial Pulmonary Fibrosis)

*Ralph Schlaeger Charitable Foundation/
RSNA Research Fellow Grant*



DELARAM SHAKOOR, MD

Hospital for Special Surgery

MR Neurography & Quantitative Muscle
MRI for Evaluation of Complicated
Peripheral Facial Nerve Palsy

RSNA Research Fellow Grant



DAVIS VIGNEAULT, MD

Stanford University

Developing a Fully Automated Pipeline for High-Fidelity
Modelling, Measurement, and Longitudinal Comparison
of Abdominal Aortic Aneurysms

RSNA Research Resident Grant

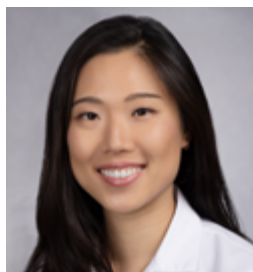


AMY J. WISDOM, MD, PHD

Massachusetts General Hospital

Immunologic and Radiologic Characterization of a Novel Genetically Engineered Mouse Model of Glioblastoma

Prince/RSNA Research Resident Grant



SOPHIE Y. WONG, MD

University of California, San Diego

The Assessment and Quantification of Regional Myocardial Function on Coronary CTA Using a Deep Learning Approach

RSNA Research Resident Grant



JAMES YU, MD, MSCS

University of Texas Southwestern Medical Center

Development of Learning-Based Simultaneous Localization and Mapping (SLAM) for Real-Time Ar-Guided Biopsies

RSNA Research Resident Grant

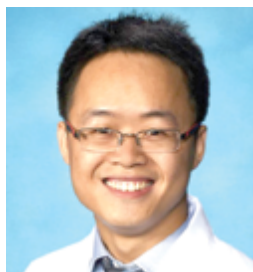


WENHUI ZHOU, MD, PHD

Stanford University

Deep Learning-Based Preoperative Tumor Margin Assessment for Personalized Surgery in Lobular Breast Cancer

RSNA Research Fellow Grant



SHUHUA ZHENG, DO, PHD

Northwestern University

Targeted Degradation of Surviving with PRTOACs for Glioblastoma Radiosensitization

RSNA Research Resident Grant

RESEARCH MEDICAL STUDENT GRANT



“I’ve been fortunate to receive incredible mentorship from Drs. Miles Conrad and Thienkhai Vu. I fell in love with radiology prior to starting medical school and this project has grown my knowledge of research methodology and pushed me to contribute to the field in a way that may guide patient care in the future. The whole experience has been surreal and couldn’t have been possible without the guidance I’ve received from my mentors. I’m excited to see the outcome of this multi-phase project and hope to use the knowledge I’ve gained to provide quality mentorship to the next generation of radiologists.”

- Cindy Foleack



MEHRSHAD BAKHSI

McGill University

Gaze Deviation in Acute Ischemic Stroke
RSNA Research Medical Student Grant



ADRIANNA CARTER, BS, MS

University of California, Davis

Predicting Lung Shunt Fraction in
Yttrium-90 Radioembolization of Hepatic
Carcinoma Using Contrast-Enhanced CT
RSNA Research Medical Student Grant



DEVINA CHATTERJEE

University of Maryland

Noninvasive Detection of Vulnerable
Atherosclerotic Plaque Using Perivascular Fat
Attenuation on Coronary CT Angiography
RSNA Research Medical Student Grant



KASHA CHEN

California University of Science and Medicine

Assessing Performance of Novel Unsupervised
Generalized Deep Learning Model for Perinephric
Fat Volume Quantification on Contrast Enhanced
Abdominal Computed Tomography Imaging

*Bayer HealthCare/
RSNA Research Medical Student Grant*





MIRIAM CHISHOLM

Duke University

Beyond Race: Examining the Association Between CT-Based Body Composition and Socioeconomic Factors to Better Understand Observed Differences in Body Composition by Race

RSNA Research Medical Student Grant



NATHAN CHONG

Dalhousie University

A Randomized Controlled Trial Investigating Personal Keepsakes as a Tool to Reduce Intraprocedural Patient Anxiety During Thyroid Biopsies in Interventional Radiology

RSNA Research Medical Student Grant



JULIA DING

Emory University

Developing 3D Intravascular Ultrasound Guidance for Recanalization of Central Venous Occlusions

RSNA Research Medical Student Grant



CINDY FOLEFACK

University of California, San Francisco

Quantification of Pleural Loculations with MRI as a Model for Future Study of Pleural Fibrinolytics Efficacy

RSNA Research Medical Student Grant



LAWRENCE HUANG

Rhode Island Hospital

Associations of Pulmonary Artery Elasticity with Vascular Changes in Pulmonary Hypertension

RSNA Research Medical Student Grant



IBUKUNOLUWA IBRAHIM

University of California, San Francisco

Outcomes of Combined TACE and Thermal Ablation vs. Radioembolization for Early-Stage HCC: A Propensity Matched Retrospective Analysis

RSNA Research Medical Student Grant



AMY MIHYUN JANG

University of Pennsylvania

Identifying Biomarkers for Prognosis and Treatment Selection in Neuroendocrine Tumors

RSNA Research Medical Student Grant



PETER KAPLINSKY

Memorial Sloan Kettering Cancer Center

Using Transfer Learning for Early Detection of Transforming Lung Adenocarcinoma

RSNA Research Medical Student Grant



JUSTIN LEU

University of Washington

Use of Natural Language Processing (NLP) to Predict Risk of Skeletal-Related Events (SRE) Among Patients With Bone Metastases and Improve Access to Evidence-Based SRE Prevention
RSNA Research Medical Student Grant



CONNOR MAYES

Mayo Clinic

Improving Radiology Reporting Accuracy: Use of GPT-4 to Reduce Errors in Reports
RSNA Research Medical Student Grant



MICHAEL MOHNASKY

University of North Carolina at Chapel Hill

Development of an Artificial Intelligence Algorithm to Analyze Ideal Ablation Zone Coverage and Predict Clinical Outcome in Image-Guided Cryoablation for Renal Cell Carcinoma
RSNA Research Medical Student Grant



VISHNU MURTHY

University of California, Los Angeles

Quantitative 3 Tesla Multiparametric MRI Parameters, Radiomics Features, and Deep Learning to Predict Upgrading from Biopsy-Confirmed Histopathology to Whole-Mount Histopathology in Patients with Clinically Significant Prostate Cancer
RSNA Research Medical Student Grant



TRAVIS TU NGUYEN

University of California, Los Angeles

Correlating Pre-Ablation Metabolic Signatures with Post-Ablation Recurrence in Hepatocellular Carcinoma

RSNA Research Medical Student Grant



AYDEN OLSEN

University of Chicago

Microscopy MRI of the Inner Ear

RSNA Research Medical Student Grant



MEGHANA PAGADALA

University of California, San Diego

Analyzing Radiation Impact on Brain Metastases Immune Microenvironments through Spatial Transcriptomics

RSNA Research Medical Student Grant



MEET PATEL

University of Saskatchewan

Harnessing AI for Enhanced Disease Screening in CT Imaging

Canon Medical Systems USA, Inc./

RSNA Research Medical Student Grant

Canon
CANON MEDICAL



SWATHI PAVULURI

Rutgers University

Automated Radiomic Analysis of FDG PET/MR Imaging Data for Predicting Clinical Outcomes in Cardiac Sarcoidosis

RSNA Research Medical Student Grant



JUSTIN RHEE

Brown University

Streamlining Kidney Ablation Procedure Planning via Automated Segmentation of Kidney Tumors

RSNA Research Medical Student Grant



SANA SHAH

University of California, Irvine

The Value of Emergency Pelvic Imaging for Acute Pelvic Pain for Reproductive Age Patients, a Retrospective Review with Cost-Benefit Analysis

RSNA Research Medical Student Grant



JONATHAN SHIH

University of California, San Francisco

MRI Brain after Pediatric Cardiac Arrest: Descriptive and Quantitative Patterns of Injury in Association with Neurologic Outcome

RSNA Research Medical Student Grant



SIERRA SILVERWOOD

University of Washington

A Longitudinal Assessment of Remote IMRT/
VMAT Training Curriculum in Low- and
Middle-Income Countries

RSNA Research Medical Student Grant

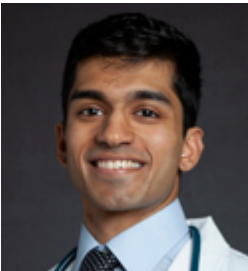


HAYDEN SMITH

Emory University

Using Reader Eye Tracking to Measure the
Impact of an Adaptive Learning-Based
Educational Module on Interpreting Imaging
Studies Depicting Cerebellopontine Angle Masses

RSNA Research Medical Student Grant



VINEETHSUBBU SOMASUNDARAM

Brown University

Predictive Modeling for Recurrent
Pulmonary Embolism: A Multimodal
Approach for Personalized Medicine

RSNA Research Medical Student Grant



SIVA SREEDHAR

Northwestern University

MRI Evaluation of Atrioventricular
Mechanical

RSNA Research Medical Student Grant



ARMIN TAVAKKOLI

Dartmouth-Hitchcock Medical Center

Evaluating the Therapeutic Potential of FLASH
Irradiation in Brain Tumor Treatment

RSNA Research Medical Student Grant

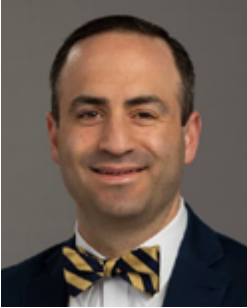
EMERGING ISSUES GRANT



“The RSNA Emerging Issues Grant supported my research to develop and test a multilevel intervention aimed at addressing both patient and provider barriers to lung cancer screening among the Hispanic population. This project also facilitated our team’s partnership with community to engage the Hispanic population effectively in the study.”

- Gelareh Sadigh, MD

Emerging Issues Grant Topic: Interventions/Solutions to Increase Radiology Workforce Diversity and/or Decrease Health Care Disparities



DANIEL W. GOLDEN, MD, MPH

Rush University

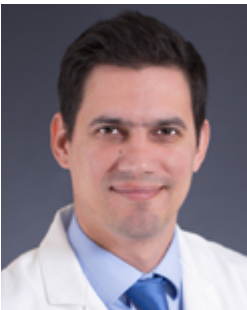
A Stepped-Wedge Cluster Randomised Controlled Trial to Compare Standard Radiotherapy Patient Education to Patient Education Enhanced by a Graphic Narrative Discussion Guide



GELAREH SADIGH, MD

University of California, Irvine

Empowering Latinx Patients Lung Cancer Screening Uptake (Empower Latinx)



AKOS VARGA-SZEMES, MD, PHD

Medical University of South Carolina

Domestic and Global Remote Training of MRI Technologists for Advanced Cardiovascular Imaging

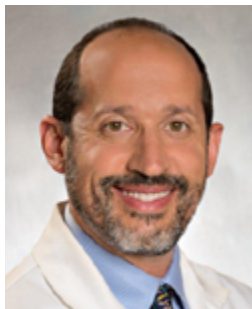
Emerging Issues Grant Topic: Value-Based Radiology: Applying Implementation/Improvement Science to Deliver High Quality and Efficient Care in Today's Resource-Constrained Health Care Environment



BRUNO HOCHHEGGER, MD, PHD

D'Or Institute for Research and Education

Optimizing Radiology Examination Scheduling Through the Development and Implementation of a Deep Learning Based Prediction Model of Patient Non-Attendance



AARON D. SODICKSON, MD, PHD

Brigham and Women's Hospital

Streamlining CT Acquisition, Post-Processing and Reproducibility Across a Multi-Hospital Radiology Enterprise

Emerging Issues Grant Topic: Environmental Impact and Sustainability of Radiology



KATE HANNEMAN, MD, MPH

University of Toronto

Sustainability, Environmental Exposures, and Impact on Medical Imaging Utilization in Radiology (SEMI-RAD)



ANDREW HERNANDEZ, PHD

University of California, Davis Health

Comprehensive Energy Metering and Energy Efficiency-driven Protocol Optimization in CT and MRI



SEAN ALEXANDER WOOLEN, MD

University of California, San Francisco

Identifying MRI Scanning and Cooling Approaches for Energy Reduction in Radiology: A Path to Decarbonizing MRI Operations

EDUCATION GRANTS



“This Education Project Award will allow me and my colleagues to apply our combined expertise in peer education, curriculum development, and gamified learning technologies to develop novel educational tools for radiology residents. I give thanks to my mentor Dr. Altes and to the team, Drs. Urban, White, and Griffin, for their enthusiastic commitment to achieve this exciting, cross-discipline collaboration.”

- Dhara Kinariwala, MD

Derek Harwood-Nash International Education Scholar Grant



FAROUK DAKO, MD, MPH

University of Pennsylvania

Empowering Healthcare: Advancing Medical Imaging Education in LMICs through AI and Imaging Training Initiatives

RSNA/AAR/APDR/SCARD Radiology Education Research Development Grant



WASIF BALA, MD

Emory University

Using Eye Tracking to Measure the Impact of an Adaptive Learning-Based Educational Intervention on Interpreting Volumetric Imaging Studies



JEFFREY WEINSTEIN, MD, FSIR

Beth Israel Deaconess Medical Center

Integration of Hand Motion Analysis for Monitoring Technical Skills Acquisition Within High-Fidelity Interventional Radiology Endovascular Simulation Training



Education Project Award

DHARA KINARIWALA, MD

University of Missouri

ScanBright: A Mobile Learning Resource for Radiology Residents Using Gameification and Adaptive Learning



KATRINA MCGINTY, MD

University of North Carolina at Chapel Hill

Virtual MRI Education in Low Resource Setting

ROENTGEN AWARD

This award allows residency program directors and department chairs to recognize outstanding residents and fellows who've advanced radiologic research. Recipients of this award have published in peer-reviewed journals, presented work at regional and national meetings, received a research grant or contributed to the success of a departmental research program.



Michelle Ginsberg (Vice Chair of Education), Noam Nissan, winner, and Larry Schwartz (Chair).

RAMI MAHMOOD ABAZID, MD

Western University

JOHN PAUL ABRINA, MD

BC Cancer Kelowna

MUHTADA KAMAL ALDIN, MD

University of California, Davis

MUZAMIL ARSHAD, MD, PHD

University of Chicago

SARA AZEEM, DO

Atlantic Health System

DAVID BAMSHAD, MD

Icahn School of Medicine at Mount Sinai

BO BAO, MD

University of Alberta

BRIAN D. BARNACLE, MD

Dartmouth-Hitchcock

ANASS BENOMAR, MD

University of Montreal

KAUSTAV BERA, MD

University Hospitals
Cleveland Medical Center

GARRICK BIDDLE, MD

University of California, Davis

MATTHEW DULLES BOURNE, DO

MedStar Georgetown University Hospital

MACEY BRANDEBERRY, DO

Aultman Hospital

ZABECCA S. BRINSON, MD, MPH

University of Texas Southwestern
Medical Center

BRANDON GRANT BROCKBANK, MD

San Antonio Uniformed Services Health
Education Consortium

FARAH CADOUR, MD

University of Toronto

TYLER E. CALLESE, MD, RPVI

University of California, Los Angeles

KELSEY R. CASANO, MD

Ochsner Clinic Foundation

RANJIT CHAUDHARY, MD

Quinnipiac University

ROBERTO CHAVEZ APPENDINI, MD

Tulane University

MONICA CHELIUS, MD

University of Pennsylvania

ERIC CHEN, MD

University Hospitals, Case Western
Reserve University

KAREN CHENG, MD

University of Southern California

SIMON CHIVI, MD

Maimonides Medical Center

CHERYL JEAN CLAUNCH, MD, PHD

Baylor College of Medicine

PATRICK CONNOR, MD

Baylor University Medical Center - Dallas

MARIA ANDREA PARRA CORRAL, MD

Texas Tech University Health Sciences
Center El Paso

OMORUYI CREDIT IRABOR, MD

Thomas Jefferson University

MATTHEW CULBERT, MD

University of Florida

BENJAMIN MICHAEL DANIEL, MD
Wake Forest University School of Medicine

J. HUGO DECKER, MD, PHD
Stanford University

ABHAY DHALIWAL, MD
Corewell Health East - William Beaumont
University Hospital

ALYSSA DICOSMO, MD
University of Vermont Medical Center

ROBERT G. DIONISIO, MD
Santa Barbara Cottage Hospital

BILL DIPLAS, MD, PHD
Memorial Sloan Kettering Cancer Center

JESSICA DOBSON, MD
Dalhousie University

DONNA EDWARDS, MD, PHD
University of Michigan

MAY ELBANNA, MBBCH, MSC, PHD
Indiana University



Francesca Rigioli, MD, Beth Israel Deaconess
Medical Center

MOHAMED A. ELBORAEY, MBBCH
Mayo Clinic Florida

AHMED FARHAT, DO
West Virginia University School of Medicine

SARAH FISCHER, MD
Montefiore Medical Center

KARA FITZGERALD, MD
University of Washington

MATTHEW GALLITTO, MD
Columbia University

SRAVANI GAMPALA, MBBS
SUNY Upstate Medical University

ANIRUDH GAUTAM, MD
Lahey Hospital and Medical Center

ISABELLE GAUTHIER, MD
University of Ottawa

BO GONG, MD
University of British Columbia

BAHER GUIRGUIS, MD
University of Kentucky

DAVID GULLOTTI, MD
Johns Hopkins University

GERALD HEFFERMAN, MD
Brigham and Women's Hospital

HAI HOANG, MD
Mount Auburn Hospital

AUSTIN HOPPER, MD
University of California, San Diego

ZOE HU, MD
Queen's University

YU-HUI HUANG, MD
University of Minnesota

CARESSA HUI, MD
Stanford University

BRIAN HURT, MD
University of California, San Diego

CHRISTOPHER M. HUSSON, MD
Tripler Army Medical Center

KENNETH HUYNH, DO
University of California, Irvine

BADR ID SAID, MD
University of Toronto

AUSTIN J. IOVOLI, MD
Roswell Park Comprehensive
Cancer Center

DAVID KAKISH, MD
University of California, Irvine

MATTHEW KANG, MD
Eastern Virginia Medical School

ANGELA KANNA, MD
Tufts Medical Center

DANIEL KEESLER, MD
Creighton University School of
Medicine-Phoenix

CYMON KERSCH, MD, PHD
Oregon Health & Science University

ANAM KESARIA, MD
University of Arkansas
for Medical Sciences

GREGG KHODOROV, MD
Thomas Jefferson University

ARIA KIEFT, MD
Detroit Medical Center,
Wayne State University



Sébastien C. Robert, MD, Western University

ROMAN KOWALCHUK, MD
Mayo Clinic

RITESH KUMAR, MD
Rutgers, Robert Wood Johnson
Medical School

COLTON LABBURY, MD
City of Hope Medical Center

ZOFIA M. LASIECKA, MD, PHD
Emory University

BRADY LAUGHLIN, MD
Mayo Clinic

CONNIE LE, MD, PHD
University of Alberta,
Cross Cancer Institute

HWAN LEE, MD
University of Pennsylvania

PETER LEE, MD, PHD
Fox Chase Cancer Center

JUSTINE T. LEE, MD

Icahn School of Medicine at Mount Sinai

IAN STUART LEOPOLD, MD

Temple University

TIMOTHY LIN, MD

Johns Hopkins University

YUAN-MAO LIN, MD

University of Texas,
MD Anderson Cancer Center

SIYUAN JOHN LIU, MD, PHD

University of California, San Francisco

JONATHAN LOWENTHAL, MD

Rutgers, Robert Wood
Johnson Medical School

NICHOLAS LUIBIL, DO

ChristianaCare Health System

HAGAR MAHMOUD, MD

Bridgeport Hospital
Yale New Haven Health

JOSHUA W. MAJOR, MD

Naval Medical Center Portsmouth

CHRISTOPHER MALLORY, MD

University of Utah

THOMAS JAMES MASSUTTI, MD

Southern Illinois University

STEVE MATHEW, MD

Creighton University

ZACHARY S. MAYO, MD

Cleveland Clinic Taussig
Cancer Institute

BENJAMIN J. MCCAFFERTY, MD

University of Alabama at Birmingham

DAVID MCNIEL, MD, PHD

University of Arizona

JUAN D. MENDOZA, MD

Madigan Army Medical Center

STÉPHANE MICHAËL, MD

Université Laval

LUKE MILLER, MD

University of Maryland Medical Center

ALEXANDER MOELLER, MD

University of Wisconsin

JEE S. MOON, MD

Temple University Health System

ABEER A. MOUSA, MD, MS

Mayo Clinic Arizona

RIA MULHERKAR, MD

University of Pittsburgh

SABA NAAMO, MD

Geisinger Medical Center

MICHAEL B. NELSON, DO

Baylor Scott & White Medical Center

MARIA CLARA NEVES LORCA, MD

University of Rochester Medical Center

ALEX NEWBURY, MD, MS

University of Massachusetts

KATARINA THUY-DAN NGUYEN, MD

University of Rochester

NOAM NISSAN, MD

Memorial Sloan Kettering Cancer Center

VINCENT BERNARD PAGÁN, MD, PHD

The University of Texas, MD Anderson
Cancer Center

ASHWIN PARIHAR, MD
Washington University in St. Louis

SURAJ S. PARIKH, MD
University of Pittsburgh

TAYLOR PARNALL, MD
Harbor-UCLA Medical Center

CHRISTOPHER PARNELL, MD
Walter Reed National Military
Medical Center

TEESSA PEREKATTU KURUVILLA, MD
University of Louisville

HALEY K. PERLOW, MD
The Ohio State University

EMILY PHILLIPS, MD
Hartford Hospital

KEVIN PIERRE, MD
University of Florida

MARIKA A. PITOT, MD
Mayo Clinic

JONATHAN PORTER, MD
University of Alberta

PREETI SINGH PRASAD, MD
University of Tennessee HSC,
LeBonheur Children's Hospital

KUSH PUROHIT, MD
Stony Brook Medicine

JUHI PURSWANI, MD
NYU Langone Health

RANJAN RAGULOJAN, MD
University of Minnesota

RAHUL RAO, DO
University of Cincinnati Medical Center



Brianna Vey, MD, at Children's Healthcare of
Atlanta, Emory University

KARAN RAO, MD
University of Iowa Hospitals and Clinics

ABBAS RATTANI, MD
Tufts Medical Center

NIEMA RAZAVIAN, MD
Wake Forest School of Medicine

**PHILIP REED-WILLS MCDONAGH,
MD, PHD**
Virginia Commonwealth University

FRANCESCA RIGIROLI, MD
Beth Israel Deaconess Medical Center

SÉBASTIEN C. ROBERT, MD
Western University

SIRUS SAEEDIPOUR, DO
University of Kansas Health System

ANNE SAILER, MD
Yale New Haven Hospital

ANTHONY SANTISI, MD
Cooper University Hospital

ANJALI SARIPALLI, MD
Loyola University Medical Center

ALEXANDER SATEI, MD
Trinity Health Oakland

BANSI SAVLA, MD
University of Maryland

MOSSUM KUMAR SAWHNEY, MD
SUNY Downstate Health Sciences
University

JOSHUAL P. SCHIFF, MD
Washington University

RAYMOND SCOTT, MD
Loma Linda University Medical Center

FARYAL SHAREEF, MD
Yale New Haven Hospital

JULIANA SITTA, MD
University of Mississippi Medical Center

PHILIP T. SKUMMER, MD, MPH
Medical College of Wisconsin

ROBERT J. SMALLEY, MD
Boston Children's Hospital

NADIA SOLOMON, MD
Yale School of Medicine

AVIK SOM, MD, PHD
Massachusetts General Hospital

ALEXANDER SONG, MD
Staten Island University Hospital
Northwell Health

SOUMYAJIT ROY, MBBS
RUSH University Medical Center

CHELSEA A. SPARKS, MD
University of South Florida Morsani
College of Medicine

HEATHER STEFEK, MD
Vanderbilt University Medical Center

HILARY STRONG, MD
Memorial University

SHRUTHI SURESH, MD
Cleveland Clinic

FARAH TAMIZUDDIN, MD
NYU Grossman School of Medicine

VIVIAN TAN, MD
Schulich School of Medicine,
Western University

MILTADIS TEMBELIS, MD
NYU Grossman Long Island School
of Medicine

CODY THORNBURGH, MD
University of Missouri, Columbia

COLLIN M. TROESTER, MD
Baylor Scott & White Medical Center

ERIC L. TUNG, MD
Massachusetts General Hospital

EDUARDO URIAS, MD
University of Utah

EUGENE JOHN VAIOS, MD, MBA
Duke University Hospital

NITIN VENUGOPAL, MD
University of Washington

NIPUN VERMA, MD, PHD
Yale University



Major Juan D. Mendoza, MD, at Madigan Army Medical Center

BRIANNA VEY, MD

Children's Healthcare of Atlanta,
Emory University

GEORGE KOSHY VILANILAM, MBBS

University of Arkansas for
Medical Sciences

KRISTIN WALKER, MD, MBA

University of Virginia

GREGORY J. WEHNER, MD, PHD

Washington University School of
Medicine, Mallinckrodt Institute of
Radiology

ROSS WHITLOCK, MD

Aurora St. Luke's Medical Center

SYDNEY WONSKI, DO

McLaren Healthcare

TRUDY C. WU, MD

University of California, Los Angeles

JACOB WYNNE, MD

Emory University

JESSICA LIN XING, MD

University of Arizona, College of
Medicine-Tucson

JENNY YAN, MD

Weill Cornell Medicine
New York-Presbyterian Hospital

ALLEN YEN, MD

University of Texas Southwestern
Medical Center

JANE DANIELLE YIN, MD

Allegheny Health Network

ATEFEH ZEINODDINI, MD

University of Texas Medical Branch
Galveston

WENHUI ZHOU, MD, PHD

Stanford University

ALYSSA ZIMNY, MD

Aurora St. Luke's Medical Center



RSNA Research & Education
Foundation
820 Jorie Blvd., Suite 200,
Oak Brook, IL 60523
1-630-571-2670
refoundation@rsna.org
RSNA.org/Foundation

GIVE

FOUR EASY WAYS

VISIT

RSNA.org/Donate

CALL

1-800-381-6660

EMAIL

refoundation@rsna.org

TEXT

40TH to 91999

WWW.RSNA.ORG/DONATE

